



Photo Electric Control (PEC)

Automatic dusk to dawn operation of tower and obstruction lighting circuit

Highlights

- Meets FAA/FCC requirements
- Two 30 ampere load contacts
- Direct replacement of older and newer types
- Stable electronic circuitry
- No chatter due to built-in time delay
- Molded plastic control housing with gasket
- Cast aluminum junction box with one inch hubs, top and bottom
- LED power indication
- Surge protected
- Manufactured by Unimar

Specifications

Type: Light actuated electronic circuitry with high current electromechanical output contacts

Indication: LED power indicator

Operating Voltage: 120 VAC \pm 20% 50/60 Hz

Output Rating: Two SPST N.O. 30 Amp contacts

Terminations: Screw terminals for up to #8 AWG wire

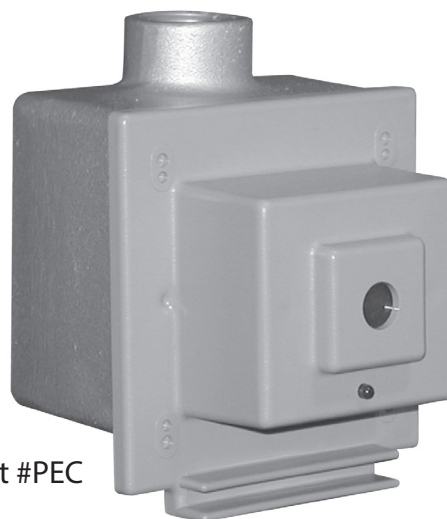
Mechanical: ABS plastic housing with gasket seal

Multiple knockout holes for optional mounting to aluminum boxes

Light Actuation Levels (Factory Calibrated):

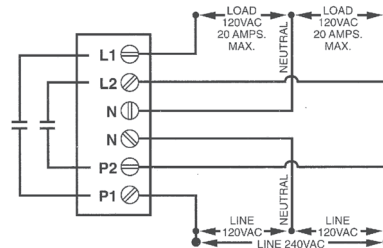
Energized: 35fc and below

De-energized: above 60fc

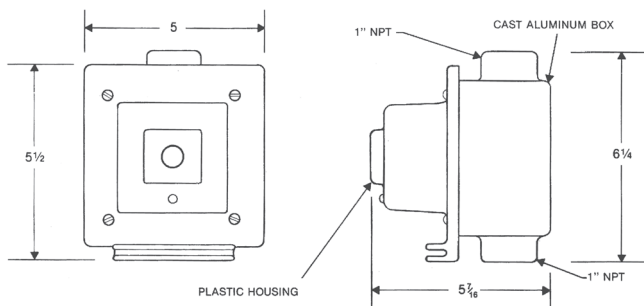


Part #PEC

Three wire service switching both hot lines.



Mechanical



Note: All dimensions in inches.