



Introducing the
**L-890 Airport Lighting Control
and Monitoring System**
(ALCMS)

Rev 0

Proudly supplied by Airport Lighting Company

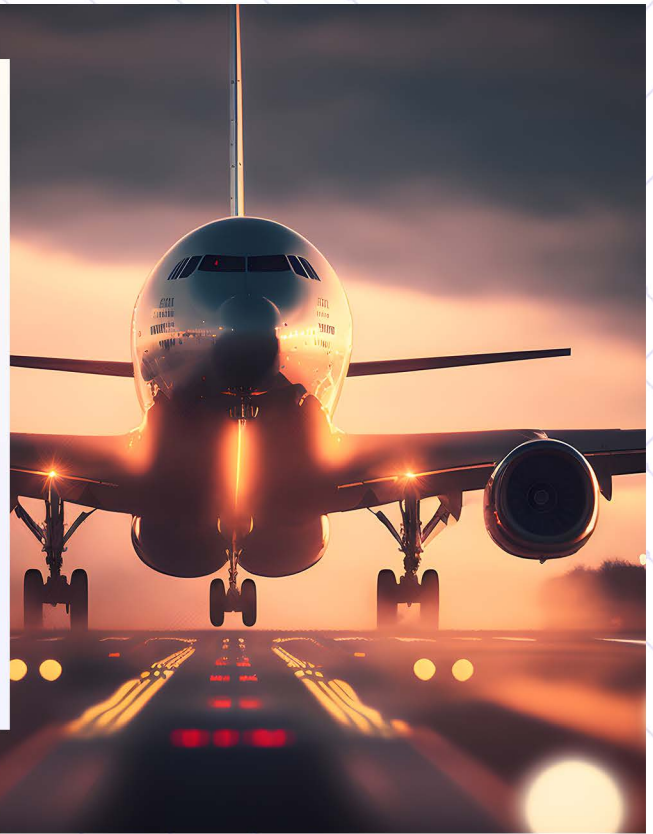
*Supplying quality airfield lighting products
to airports worldwide since 1967*



About

Airport Lighting Company

Since 1967, Airport Lighting Company has been a world-class supplier of high-quality airfield lighting solutions, including runway lights, approach systems, and power and control equipment. We use tech-based design, build, and testing processes that ensure our products consistently meet or exceed industry standards, creating extra value for our customers.



Trusted partners **invested in your success**



Airport Lighting Company takes pride in serving our customers' airfield lighting and navigational aids needs with high-quality products using the latest technology. We also prioritize creating an exceptional customer service experience that builds long-lasting partnerships.

Our experts take the time to listen to your project requirements, make product and configuration recommendations, and deliver a solution that optimizes construction scheduling. When you need technical advice or installation support, Airport Lighting Company is just a phone call away to ensure you get the most out of our products.

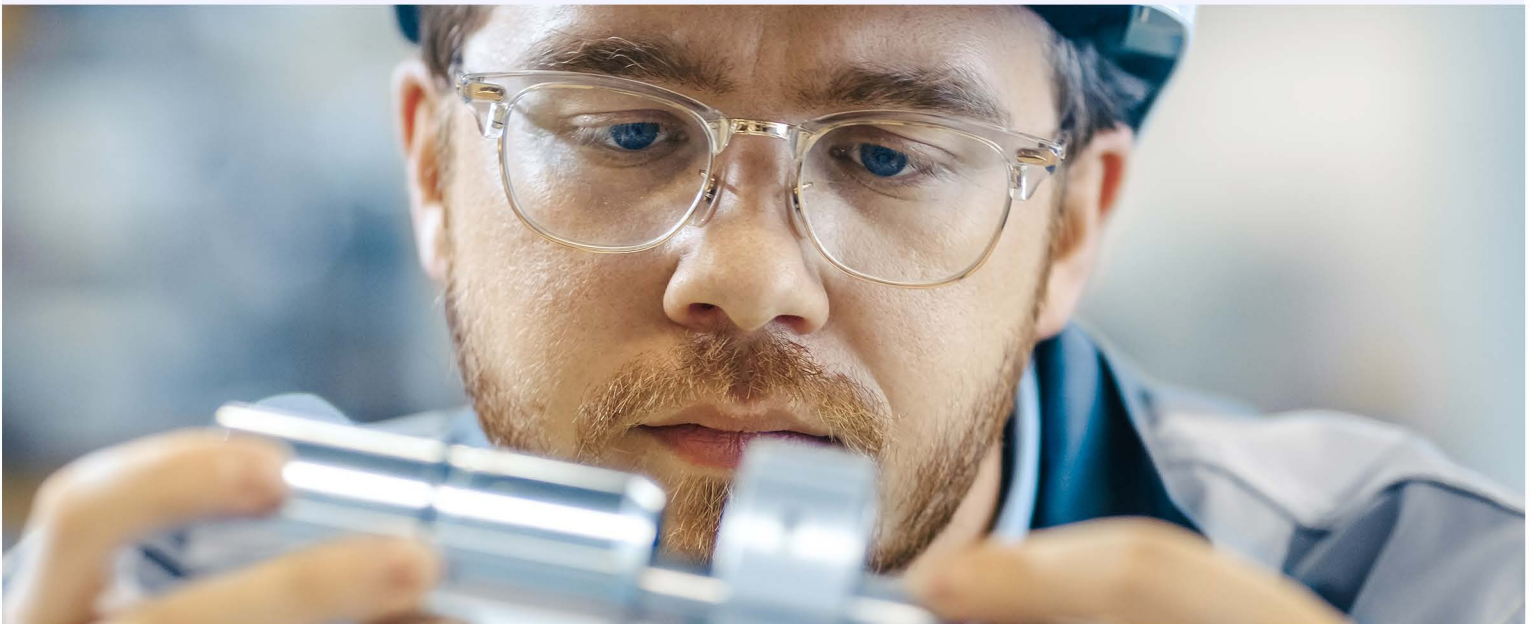
We provide more than exceptional customer service – we simply do what great partners should.

Quality products built by the best people

Our engineers, technicians, production team, and other personnel are among the best in their fields and are always excited about new innovations that will help our customers improve their operations. We hire only the most talented technicians to ensure excellent product quality using the most durable materials, built with care and attention to detail.

The Airport Lighting Company team is also dedicated to connecting you with customized solutions while treating you with the courtesy and respect you deserve at every interaction.

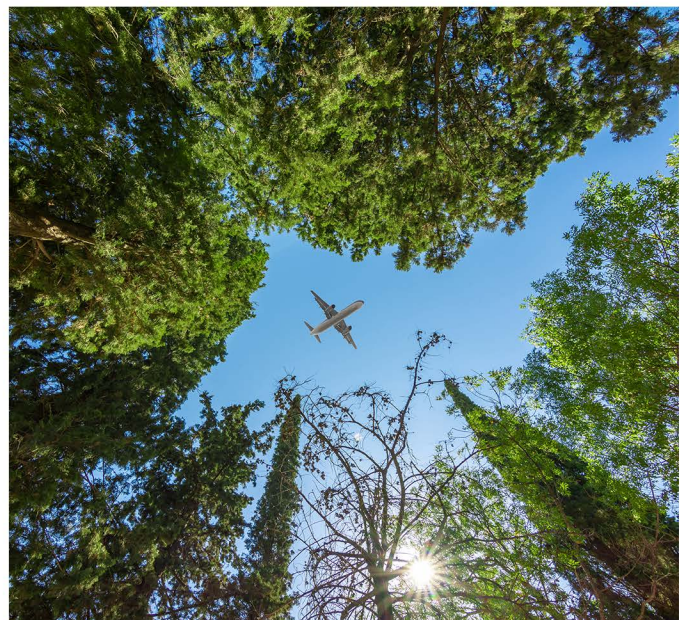
We're proud that many of our staff have been with us for decades, and even prouder of our team's commitment to keeping our customers happy.



An unwavering commitment to sustainability

Airport Lighting Company is committed to global environmental sustainability. We operate with the conservation and preservation of natural resources as one of our primary guiding principles in every facet of product development, manufacturing, and delivery.

Our company remains committed to employing environmentally sustainable practices to help create a more livable world for future generations.



Control Equipment Installation List

United States

Allentown Queen City
Municipal Airport
Allentown, PA

Bethel Airport
Bethel, AK

Cando Municipal Airport
Cando, North Dakota

Creston Municipal Airport
Creston, IA

Cuba Municipal Airport
Cuba, MO

Cumberland Municipal Airport
Cumberland, WI

Danville-Boyle County Airport
Stuart Powell Field
Danville, KY

Darke County Airport
Versailles, OH

Delaware Airpark
Dover, DE

Dodge County Airport
Juneau, WI

Drake Field
Fayetteville, AR

Easterwood Airport
College Station, TX

Fleming Field - South St. Paul
Airport
South St Paul, MN

Fleming Mason Airport
Maysville, KY

Franklin County State Airport
Swanton, VT

Glasgow Valley County Airport
Glasgow, MT

Granbury Regional Airport
Granbury, TX

Greater Binghamton Airport
Binghamton, NY

Hutchinson City Airport
Hutchinson, MN

Lake Elmo Airport
Lake Elmo, MN

Luce County Airport
Newberry, MI

McMinn County Airport
Athens, TN

Moorhead Municipal Airport
Glyndon, MN

Nogales International Airport
Nogales, AZ

Northome Municipal
Northome, MN

Park River - W C Skjerven
Field
Park River, ND

Scobey Airport
Scobey, MT

Tower Municipal Airport
Tower, MN

Tupelo Regional Airport
Tupelo, MS

Waskish Municipal Airport
Waskish, MN

Yellowstone Airport
West Yellowstone, MT

Canada

Sechelt Airport
Sechelt, BC

Mop May Memorial Airport
Fort Vermilion
Fort Vermilion, AB

Puerto Rico

Aeropuerto Benjamín Rivera
Noriega
Culebra

Aeropuerto Regional
Antonio "Nery" Juarbe Pol
Arecibo

Antonio Rivera Rodríguez
Airport
Vieques

Introducing

Airport Lighting Company's L-890 ALCMS

Our reliable ALCMS helps simplify the control and monitoring of lighted visual aids, making approach and landing safer and more efficient for aircraft.

The system offers reliable, efficient performance, whether used for a general aviation airport that supports only a few daily operations or a large commercial airport that caters to hundreds of operations on any given day.

Compliances

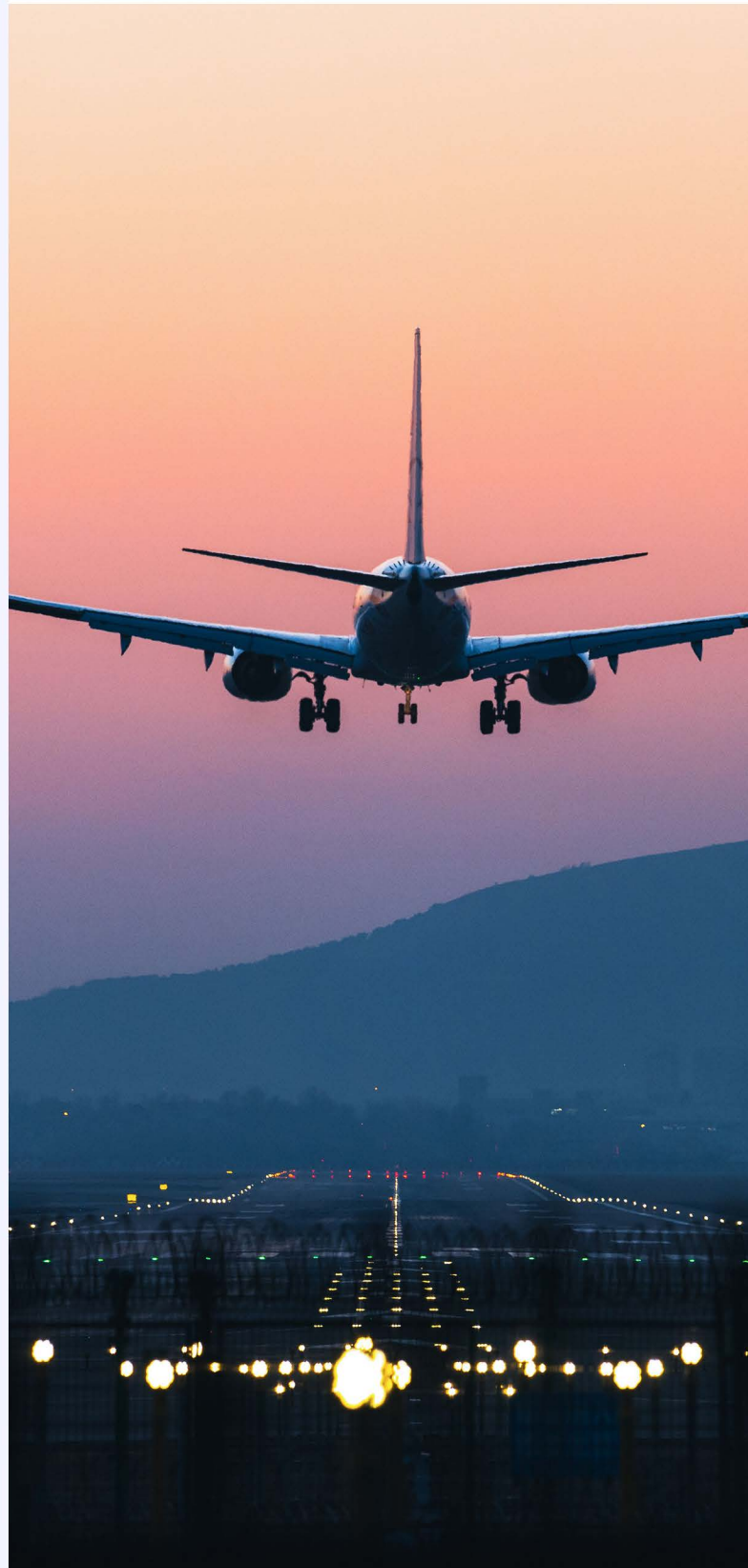
Certified to FAA AC 150/5345-56
(Current Edition)

ICAO Annex 14, Vol. 1

ICAO Aerodrome Design Manual, Part 5



Intertek

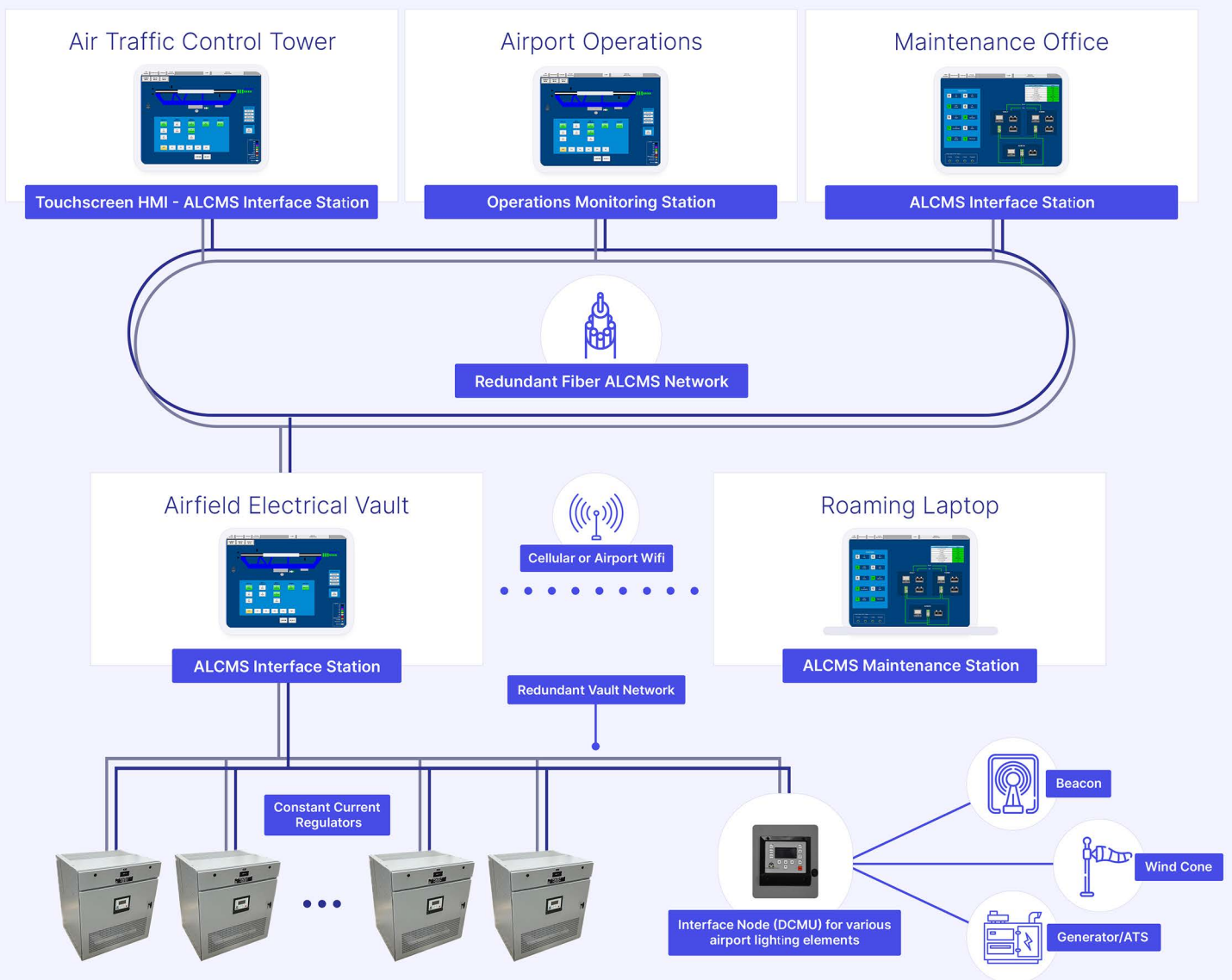




Key Features of the L-890 ALCMS

- Preprogrammed preset failsafe that can be reconfigured in the field
- Individual control of each airport lighting circuit element
- Touchscreen graphics are customizable to your individual requirements
- Support of redundant communication networks, including Single Mode Fiber (SM), Multimode Fiber (MM), Wireless RF, and Hardwire
- Control of non-regulator elements such as beacons, wind cones, generators, ATS, and more
- Customizable RVR preset configurations
- Open architecture supports simple integration of off-the-shelf replacement parts
- Future-proof system design that's easily expandable
- The Airport Lighting Company ALCMS is compatible with any FAA-qualified CCR
- Real-time monitoring with extensive alarm and reporting capabilities
- Grant/deny request system ensures secure control transfer between stations
- Variable parameters for each circuit and device, including on-delay, soft start, monitoring, and alarming
- Supports integration with L-854/ARCAL and photo-cell
- Programmable preset buttons automate standard procedures

This system showcases a range of versatile connectivity options, demonstrating the flexibility and adaptability of our advanced solutions



Benefits of Using the L-890 ALCMS

Seamless management of airport lighting components

The L-890 ALCMS provides complete management of your airport lighting system by effortlessly controlling the sequencing and intensity of runway and taxiway lights, minimizing the risk of runway incursions

Remote monitoring for control towers

Empower your maintenance team with robust system monitoring that allows them to identify issues and perform necessary repairs promptly, reducing system downtime and improving operational efficiency.

Weather sensor integration

The L-890 ALCMS can incorporate weather sensors that help adapt lighting conditions based on real-time weather data. During fog, rain, or snow, the system can adjust the intensity and configuration of lights to maintain visibility thresholds, ensuring safe aircraft movements.

Supports swift emergency response

In the event of an emergency, the L-890 ALCMS can be programmed to activate specific lighting configurations to guide emergency vehicles, assisting them in navigating the airport terrain and reaching critical areas efficiently when a swift and effective response is paramount.

Redundancy and backup systems

Continuous airport operations are ensured by integrated redundancy and backup systems, even during unforeseen circumstances such as acts of nature or power disruptions.

Supports operational decision-making

Real-time data provided by the L-890 ALCMS can be shared with airport operational personnel to support a coordinated approach to air traffic management. Management will be able to make data-driven decisions on optimizing airport operations, minimizing delays, and proactively scheduling maintenance based on predictive analytics.

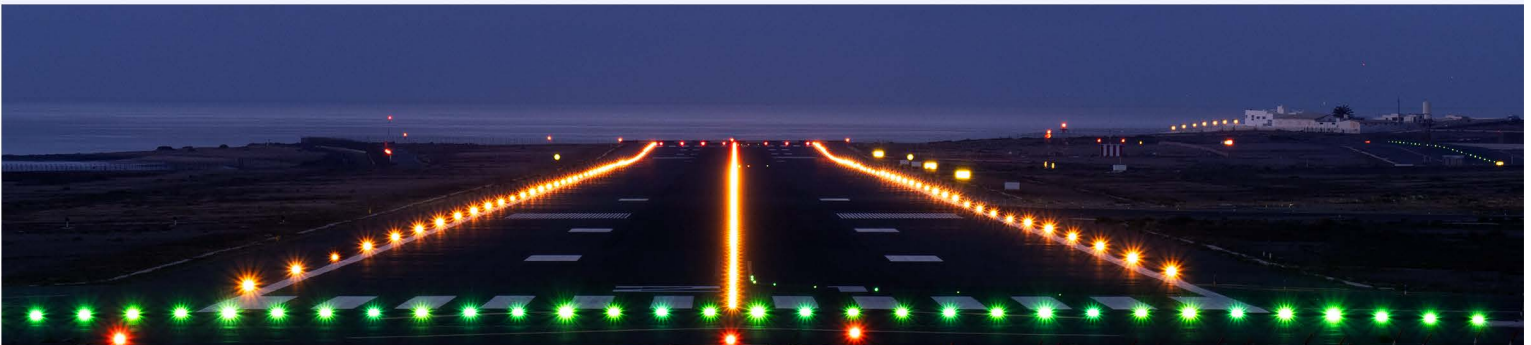
Installation and Maintenance

Our engineers designed the L-890 ALCMS for fast, seamless, and safe installation and integration with your existing system

Engineers typically install control stations on redundant fiber communication networks to help provide ongoing functionality in the event of an unexpected break. Redundant communication link setups allow for easier maintenance and support future system expansion. For sites where redundant fiber is not an option, the ALCMS can support redundancy with other communication links like wireless.

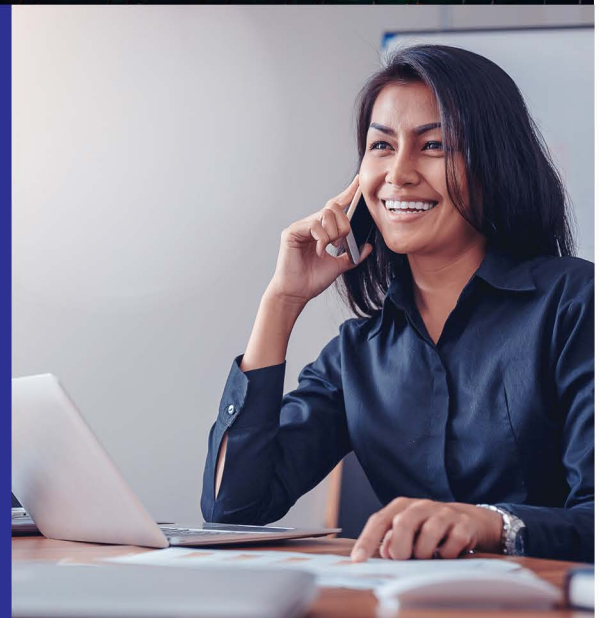
Touchscreen functionality allows for easy customization and automation for each circuit and device, including beacons, wind cones, generators, ATS, and more, for parameters such as on-delay, soft start, monitoring, and alarms.

Airport Lighting Company offers products that are easy to maintain and troubleshoot. Ask us about how you can ensure the ongoing efficient operation of your L-890 ALCMS with a few simple checks.



Flexible Maintenance Agreements Available

To ensure your airport lighting system is running in top shape for years to come, Airport Lighting Company offers flexible maintenance agreements tailored to your specific needs. Our plans include a range of options, from ongoing phone support to 24/7 on-site service, providing you with the peace of mind that expert help is always within reach. Our commitment to quality and customer satisfaction means that your lighting systems are maintained at optimal performance levels, ensuring safety and efficiency for all airport operations. *Options subject to airport location and common flight availability.*



Quality Control and Warranty

Product performance and reliability are non-negotiable when airfield safety is on the line.

Our L-890 ALCMS undergoes rigorous testing and certification processes to ensure reliability and compliance with international aviation standards set by organizations such as the International Civil Aviation Organization (ICAO) and the Federal Aviation Administration, delivering the utmost operational precision, efficiency, and safety.

Before shipment, each product is put through a multi-step quality control process, including hours of testing before we place any certification label on the product.

This exhaustive quality control process will ensure that the installer and the end user have the highest level of product reliability and performance.



Comprehensive 2-year warranty

Airport Lighting Company offers a standard warranty under the relevant governing bodies that protects you against mechanical, electrical, or physical defects for one year after the date of installation or two years from the date of shipment from our plant.

This guarantee applies to all products that were installed and used in accordance with factory, FAA, and ICAO recommendations and have not been damaged due to negligence or force majeure. Please refer to our standard terms and conditions and return policy or ask us for further details.

Expert Technical Assistance

An Airport Lighting Company expert technician is ready to assist you throughout the lifecycle of your project. When you need help installing, maintaining, or troubleshooting any of our products, call 1-866-212-1060 for professional live support you can count on.

Other High-Quality Airport Lighting Company Products

Airport Lighting Equipment



L-861
Medium Intensity Light



L-861(L)
LED Edge Light



L-862(L)
LED High Intensity Runway
Edge Lights



L-850(L)
LED Runway In-Pavement
Lights



L-852(L)
LED Taxiway In-Pavement
Lights

Approach Aides



L-880(L)/L-881(L)
LED Precision Approach
Path Indicator (PAPI)



L-849(L)
LED Runway End Identification
Lights

Power & Control Equipment



L-828/L-829
Ferroresonant Constant
Current Regulator (CCR)



L-847
Circuit Selector Switch



L-821 Type I
Airport Lighting Control Panel



L-821 Type III
Airport Lighting Control Panel



S-1 Series Cutout

Signs and Markers



L-858 D-LUX
Guidance Sign



L-858 I-LUX
Guidance Sign

Custom Parts & Equipment



L-828/L-829 Ferroresonant
Constant Current Regulator
Switchgear Regulatory Assembly



Contact

Ask us about how the
L-890 ALCMS
can help improve your airport operations!

As a global leader in airport lighting solutions, our company has an extensive worldwide distribution network. Get in touch with an Airport Lighting Company distributor near you today.

Please call our global headquarters at

315-682-6460

or

1-866-212-1060

(toll free)

or visit

www.airportlightingcompany.com/contact-us

to connect with an ALC expert near you.